



GMT MONTHLY MEMBERSHIP PROGRESS REPORT

Results as of: 5/31/2020

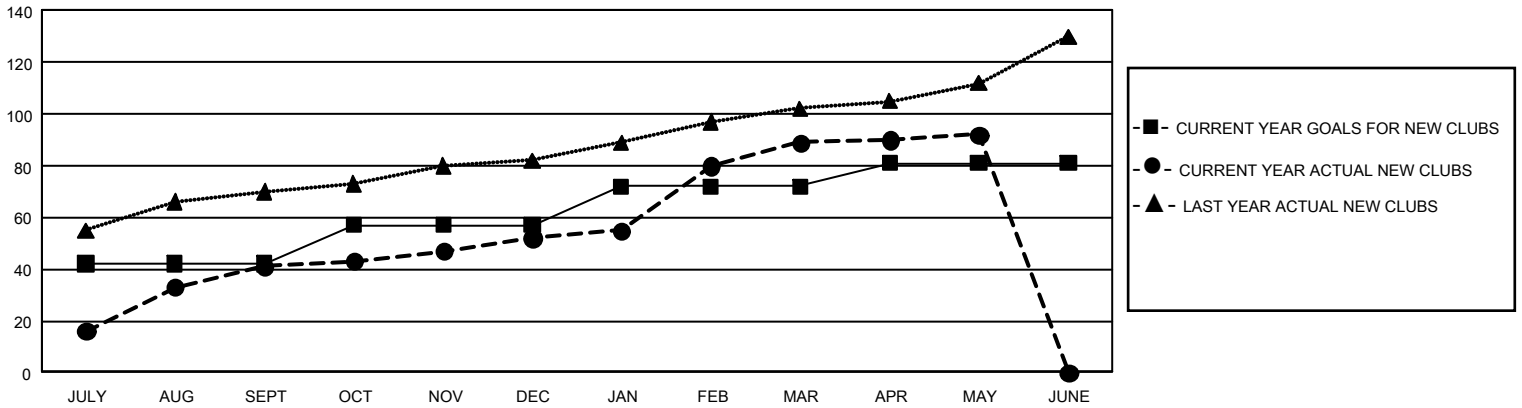
GMT Constitutional Area 6, Group P

GMT: OPEN

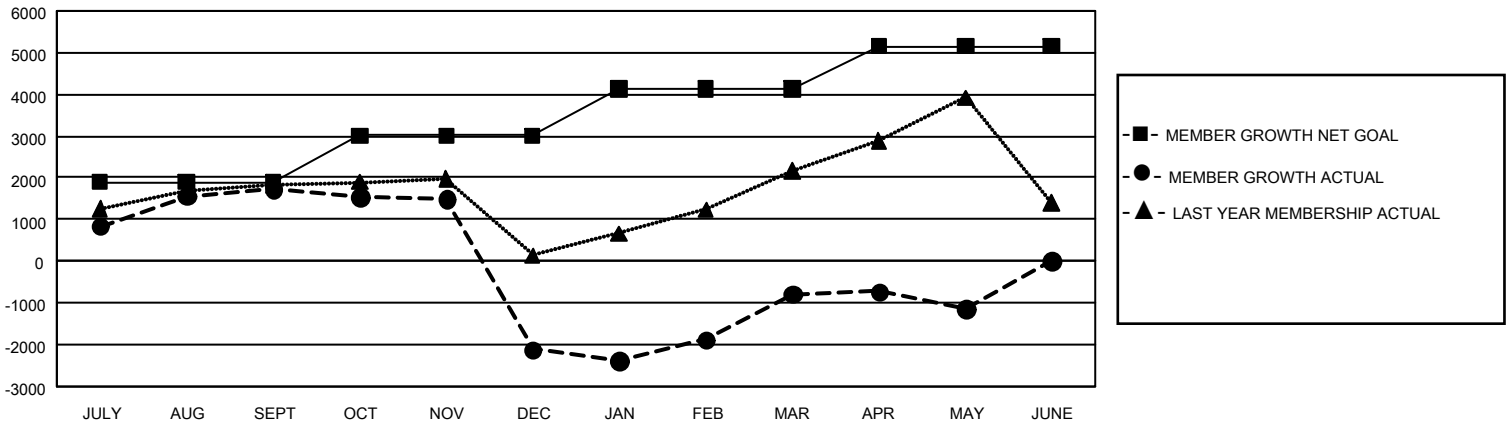
REPORT DOES NOT INCLUDE CLUBS IN UNDISTRICTED AREAS.

Clubs				Members			
RESULTS FOR 2019-2020				RESULTS FOR 2019-2020			
QUARTER	NEW CLUB GOAL	NEW CLUBS	DROPPED CLUBS	QUARTER	MEMBER GROWTH NET GOAL	MEMBER GROWTH ACTUAL	DROPPED MEMBERS ACTUAL (including transfers)
JULY/AUG/SEPT	126	41	7	JULY/AUG/SEPT	5,670	3,482	1,497
OCT/NOV/DEC	45	11	66	OCT/NOV/DEC	3,345	1,284	4,918
JAN/FEB/MAR	45	37	9	JAN/FEB/MAR	3,345	4,043	2,013
APR/MAY/JUNE	27	3	0	APR/MAY/JUNE	3,120	824	1,030

GOALS AND ACTUAL NEW CLUBS CUMULATIVE



GOALS AND ACTUAL MEMBERS CUMULATIVE



DROPPED CLUBS: 82	1,065 CLUBS OF 1,625 ADDED 1 OR MORE NEW MEMBERS	GENDER DISTRIBUTION
DROPPED MEMBERS	CLICK HERE FOR CUMULATIVE MEMBERSHIP DATA	MALE 52,177 (77.74%)
DECEASED 158		FEMALE 14,943 (22.26%)
CLUB CANCELLED 2,105		TOTAL FAMILY UNIT MEMBERS 26,999
OTHER 7,193		FAMILY MEMBERS PAYING HALF DUES 16,600
TOTAL 9,456		